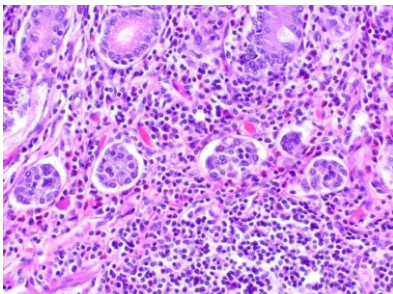
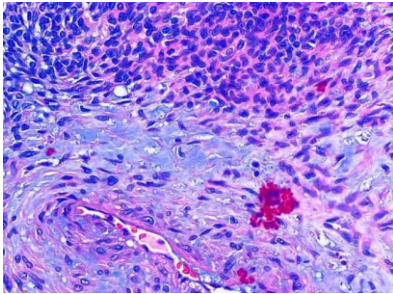
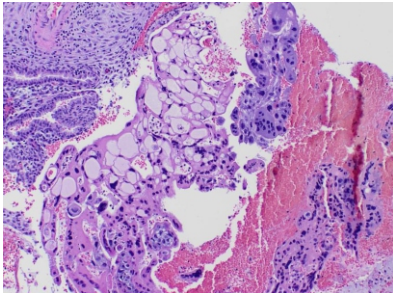


EP100

Pathological
Microscope





Specifications

Binocular Observation Head	<ul style="list-style-type: none"> Siedentopf observation head inclined at 30° rotatable at 360°. Diopter adjustment ring on ocular tube. (±5). Interpupillary distance from 50mm to 75mm.
Eyepiece (Anti fungus coated)	<ul style="list-style-type: none"> Wide field 10X (Paired) 20 F.O.V. 18mm
Objectives (Anti Mold & Anti fungus coated)	<ul style="list-style-type: none"> Infinity Plan Achromatic 4X Infinity Plan Achromatic 10X Infinity Plan Achromatic 20X (optional) Infinity Plan Achromatic 40X (S.L.) Infinity Plan Achromatic 100X Oil (S.L.)
Mechanical Body	<ul style="list-style-type: none"> Co-axial focusing system. PRE-FOCUSING LEVER & TENSION ADJUSTMENT RING. The slow motion has 1Div=0.002mm. Quadruple nosepiece revolves on ball bearing. (Optional Quintuple nosepiece) Double plate mechanical stage size 140mm x 132mm having low positioned controls. Cross movement 76mm x 50mm.
Sub Stage Condenser	<ul style="list-style-type: none"> Abbe centerable condenser N.A. 1.25 with iris diaphragm.
Illumination System	<ul style="list-style-type: none"> The built-in-base illumination system with Ultra high brightness single 3W LED cold light source. Brightness control knob. Collector fitted with iris diaphragm for koehler effect for uniform illumination.
Standard Accessories	<ul style="list-style-type: none"> Dust cover, operating manual, guarantee card, Styrofoam molded pack.



Medimage Technologies Pvt. Ltd.

3A, Type II, I.E., Kukatpally, Hyderabad (A.P), India - 500 072

Ph: 91-040-23075680

Fax: 91-040-23070848

Email: info@metavis.com

Web: www.metavis.com