



MetaCAM HS T-Series Cameras

Electronic Rolling Shutter



Welcome to the world of Microscopic imaging, Metavis introduces range of world class economic camera MetaCAM HS-T

MetaCAM be directly interface with Trinocular port of any Stereo-zoom, Biological, Metallurgical or Measuring Microscope with a 0.5x CMOS adaptor, making compatible with most of microscope.

MetaCAM a scientific grade camera with high -fidelity color reproduction, one click image acquisitions and storage capabilities. It comes along with Stand Alone software & Twain acquisition drivers to ease software integration with any Image Analysis software*. Stand alone software also feature's Measurement tools, Annotation tools, Calibration Tools & Image editing Tools & lot more to ease your application.

Features of Metavis Capture & Measurement Software :-

Image Capture , Time Lapse Imaging , Video Capture

Features:

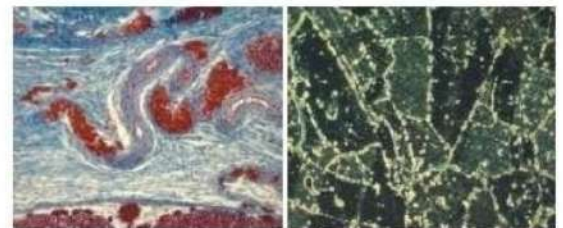
- Multi-fluorescence mode*
- Individual user profiles
- Exposure control
- Multi-camera operation
- Image annotations
- Programmable resolution
- Measurement capabilities
- Multi-focus

Features:

- Excellent color reproduction
- Superior image quality
- Best price-performance ratio

Fields of Application

- Materialography
- Petrography
- Quality Control
- Geology
- Mineralogy
- Pathology
- Hematology
- Histology
- Cell Biology
- Forensic
- Fluorescence (USB3.0)



Excellence through experience

MetaCAM CMOS HS T-Series Cameras

Electronic Rolling Shutter

Model	Metacam HS T-6.3	Metacam HS T-10	Metacam HS T-16	Metacam HS T-18	Metacam HS T-20
Pixels	6.3MP (Color)	10MP (Color)	16.0 MP (Color)	18.0 MP (Color)	20.0MP (Color)
Sensor Size	1/1.8 inch	1/2.3 inch	1/2.33 inch	1/2.3inch	1"(13.06x8.76)
Pixel Size	2.4µm x 2.4µm	1.67µm x1.67µm	1.33µm x1.33µm	1.25µm x1.25µm	2.4µmx2.4µm
Resolution/Frame Rate (Live & Capture)	3072x2048: 59FPS 1536x1024: 59FPS Any Area (ROI)	3584x2746: 7.2FPS 1792x1372: 24.5FPS Any Area (ROI)	4648x3506: 6.0FPS 2304x1750: 15.0FPS 1536x1168: 28.0FPS Any Area (ROI)	4912x3684: 5.6FPS 2456x1842: 18.1FPS 1228x922: 32.2FPS Any Area (ROI)	5440x3648:15FPS 2736x1824:50FPS 1824x1216:60FPS Any Area (ROI)
Exposure Time	0.02ms~15s	0.3ms~2000ms	0.2ms~2000ms	0.1ms~2000ms	0.1ms~15s
Sensitivity	0.31v/lux-sec	0.31v/lux-sec	0.53 V/lux-sec	0.62 V/lux-sec	462mv with 1/30s 0.21mv with 1/30s
Spectral Range(nm)	380 nm ~ 720nm (with infrared filter)				
Dynamic Range	66dB				
SN Ratio	36.5dB				
Binning	1x1,2x2,3x3,4x4				
Cooling	Natural/Peltier fan cooling (optional)				
Shutter	Electronic Rolling shutter (Global Optional)				
Image Data Format	12 bit, 14 bit (Optional)				
Operating Mode	Continuous output				
Scanning Mode	Progressive Scan				
Exposure Control	Manual/ Auto/ Area				
White Balance	Manual / One time /Auto/ Area				
Image Processing	GAMMA/ Contrast/ Black Level/ Noise Reduction /3D Noise Reduction/ Sharpness / Saturation				
Quantum Efficiency	60%				
Picture Format	JPEG/BMP/PNG/RAW				
Colour rendering technique	Ultra fine colour engine				
Software interface	Metavis MetaCAM Software. Native C/C++/C# (Supports Direct Show/TWAIN/Lab View)				
Operating System	Windows XP/Vista /7/8/10 (32 & 64 bit) OS X (Mac OS X), Linux				
Data Interface	USB3.0 (B Type)				
Lens Mount	0.5X C/CS Mount				
Dimensions / Weight	Metallic square body 58mm, height 36mm/(Exclude Lens Mount)/Approx. 180g				
Rated Voltage/Power	5V via USB				
Temperature /Humidity	Operation: 0~50°C/storage: -20°C ~ 60°C/ Working: 10%~90% RH (No Condensation) 10% ~ 60%				

