

# METAZOOM-IV PLUS

STEREO MICROSCOPE



# METAZOOM-IV PLUS

BINOCULAR / TRINOCULAR  
STEREO ZOOM MICROSCOPE

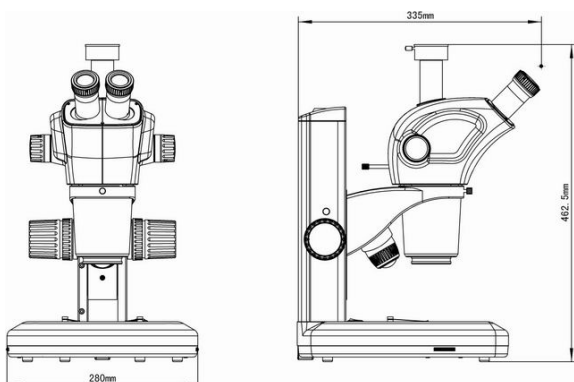
## Feature

- Positive Image Optical System **Meta Zoom - IV Plus** with zoom ratio **10:1**, provide comfortable operation and superior image, relieve the fatigue of long-time observation.
- LED illumination with the characteristics of safe, green, less heat and long lifetime, is highly efficient and economic, is able to restore the natural color of samples.
- Different applications, such as biomedical, microelectronics and semiconductor inspection, are available.

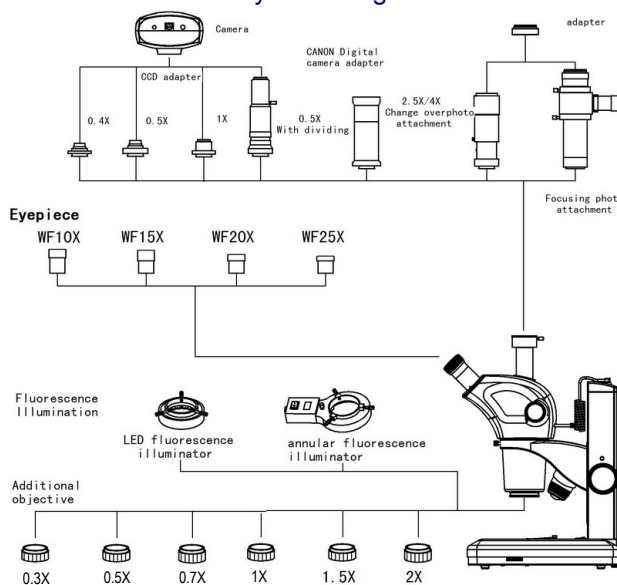
## Nomenclature

Meta Zoom - IV Plus		Standard (No auxiliary Objectives)		Auxiliary Lens									
				0.3X		0.5X		0.7X		1.5X		2X	
Working Distance		110mm		287mm		165mm		120mm		45mm		30mm	
Eyepiece	Zoom Rate Position	Magnification	View	Magnification	View	Magnification	View	Magnification	View	Magnification	View	Magnification	View
WF 10x22	0.65	6.5x	32.2mm	1.9x	107.3mm	3.25x	64.4mm	4.88x	46mm	9.75x	21.5mm	13x	16.1mm
	6.5	65x	3.4mm	19.5x	11.3mm	32.5x	6.8mm	48.8x	11.2mm	97.5x	2.3mm	130x	1.7mm

## Dimension: mm

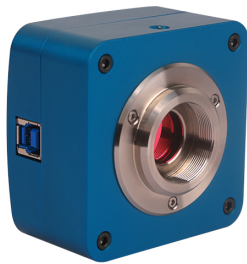


## System Diagram



## Specification:

Viewing Head	45 degree Inclined Trinocular Head, splitting ratio binocular: trinocular = 50:50, inter-pupillary distance: 54-76mm
Eyepieces	High eye-point wide field plan eyepiece PL10X/22mm, diopter adjustable (Standard)
	High eye-point wide field plan eyepiece PL15X/15mm, diopter adjustable (Optional)
	High eye-point wide field plan eyepiece PL20X/12mm, diopter adjustable (Optional)
Objectives	Zoom objectives system 0.65X ~ 6.5X. Zoom Ratio : Zoom Ratio 10:1
Total Mag. Range	6.5x to 65x with Standard 10x Eyepiece
Frame	Coaxial fine and coarse focusing mechanism, integrated Cylindrical Roller guide, focusing range 50mm, fine precision 0.002mm
Base	Base size : 320mm (W) x 260mm (D) x 274mm (H) dia. 100 Clear Glass and Black & White Plates and Specimen Holding Clips
Working Distance	110mm Standard, Vertical Effective Movement : 220mm
Illumination	Reflected illuminating 3W High Brightness LED / Transmitted illuminating 3W High Brightness LED
Field Range	Ø 33.8 ~ Ø 3.49
Additional Optics	Auxiliary Objectives : 0.3x / 0.5x / 0.7x / 1.5x / 2.0x (Optional) High eye-point wide field eyepiece WF-25x /9mm (Optional)
Camera Adapter	0.5X/0.35X/1X C-mount adapter, focus adjustable



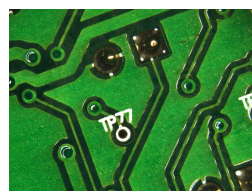
Digital Camera Attachment



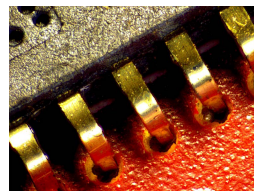
HDMI Camera Attachment



Biomedical



Electronics



Industrial



**Medimage Technologies Pvt. Ltd.**

3A, Type II, I.E., Kukatpally, Hyderabad , T.S , India - 500 072

Ph: 91-040-23075680

Fax: 91-040-23070848

Email: [info@metavis.com](mailto:info@metavis.com)

Web: [www.metavis.com](http://www.metavis.com)