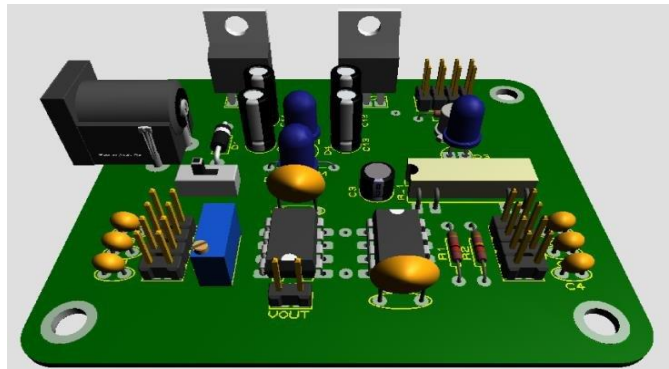
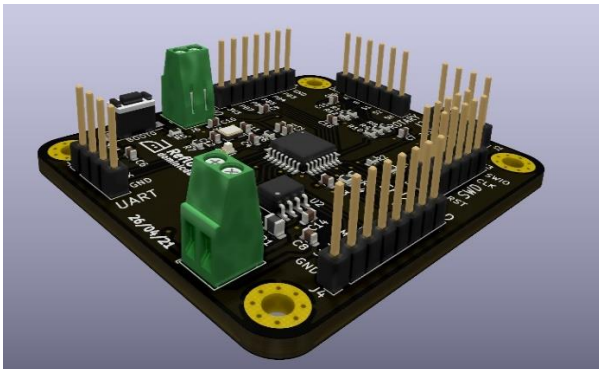


# ANGULAR 3D MICROSCOPE



**MODEL: MA-47**



## Product Introduction

Compared with traditional optical microscopes, MA – 47 Angular Microscope has the advantages of magnification display, digital magnification, easy observation, easy data storage, and intelligent operation, which can significantly reduce the fatigue of long duration work, one-button startup can achieve high-definition Video image observation provides users with a fast and comfortable experience.

MA – 47 integrates a continuously zooming optical lens and a high-definition digital camera. The display, camera, and ring light are all integrated with the body, saving work space.



TILTING DIGITAL DISPLAY

## MEASUREMENT SOFTWARE

MA – 47 has measurement function that can measure length, perimeter, area, radius, angle, etc. User can personalize the line width, color and font of the measurement target. Easy-to-use, efficient flat user interface.

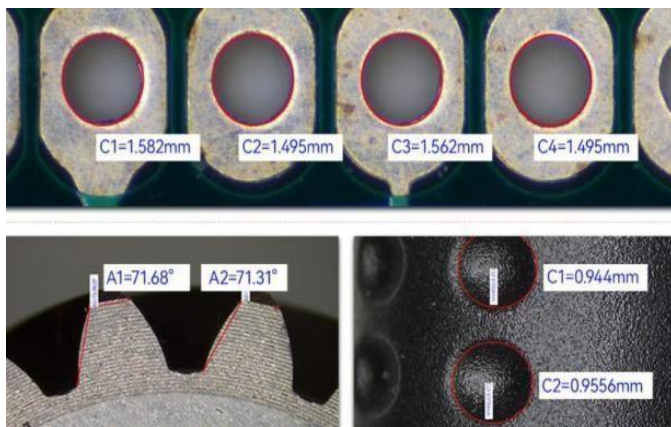


Image Taking



Measuring



3D HD imaging



HDMI Output



LED ring light



USB saving

The multi-functional continuous zoom video microscope has image display and measurement functions. It can measure length, angle, circle diameter and other geometric quantities through the screen and mouse. Built-in LED ring light lighting, the brightness can be adjusted through the on-screen menu. On-screen menus are completed through mouse operation, without the need for a computer and keyboard. Images can be taken and files can be saved into USB memory stick / pen drive.

Medimage Technologies Pvt. Ltd,

3A Type II, I.E. Prashanthi nagar, Kukatpally, Hyderabad - 500072.

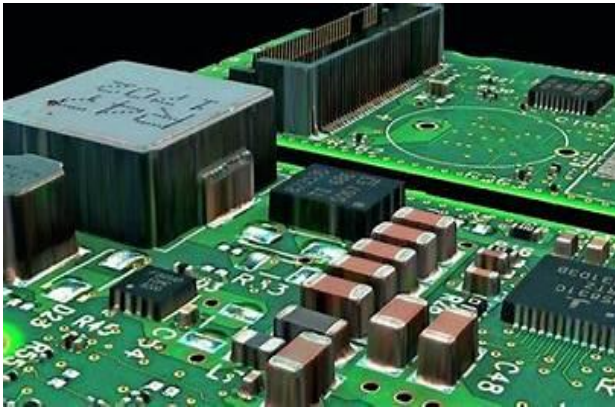
Ph: 040 - 40021732, Email: [info@metavis.com](mailto:info@metavis.com)

9391045211.

Web: [www.metavis.com](http://www.metavis.com)

Complete Imaging Solutions  
For Optical Microscopy

## Both 2D and 3D Observations are Available in this Microscope



3D view



2D View



OBLIQUE LIGHTING

- Shining light onto the sample from the side, rather than directly from above.
- This angled light creates shadows, helping to reveal surface details more clearly.
- This technique increases contrast, making it easier to see fine details, especially in transparent or faint samples.
- It highlights surface features like bumps, grooves, or textures that may be difficult to spot with regular lighting.
- Oblique lighting is particularly useful for low-contrast samples that are hard to see with direct light but become more visible with this technique.

## Technical Specifications

1. **Zoom ratio:** 1:8.3
2. **Objective zoom range:** 0.6X – 5.0X continuous zoom (Manual magnification adjustable)
3. **Focus:** Manual fine focus adjustable
4. **Working distance:** 86 (mm)
5. **Monitor:** 11.6 inch LCD monitor
6. **Total magnification:** 15X-130X
7. **Light source:** LED adjustable brightness WITH OBLIQUE LIGHTING
8. **Visualization:** 2D & 3D ( 360 Degrees )

|                                |  |                    |
|--------------------------------|--|--------------------|
| <b>Model</b>                   | <b>MA-47</b>   |                    |
| <b>Magnification</b>           | 15X-130X   |                    |
| <b>Objective</b>               | 0.6X – 5.0X  |                    |
| <b>Sensor</b>                  | 1/2"COMS   |                    |
| <b>Camera &amp; Resolution</b> | 8.3 MP ( 3840 * 2160 )   |                    |
| <b>Output</b>                  | HDM, USB, Network port   |                    |
| <b>Display</b>                 | 11.6 Inch 4K   |                    |
| <b>Function</b>                | Real-time observation, photography, video recording, measurement, storage, and data output |                    |
| <b>Module</b>                  | <b>WORKING DISTANCE</b>  | 86 MM              |
|                                | <b>FIELD OF VIEW</b>   | 24X13 - 2.9X1.6 MM |
| <b>Light</b>                   | In – Built LED adjustable brightness WITH OBLIQUE LIGHTING                                 |                    |
| <b>Power supply</b>            | Input 100V-240V-AC50/60HZ, Out Put DC12V2A   |                    |